

Westmont Elementary

Phase II Addition

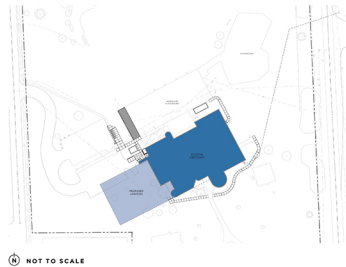
Westmont Elementary phase II will consist of an addition to the existing elementary school. The addition will include new administration area with enhanced security to the main entrance. Spaces within the new administration area will free up additional learning space in the existing areas.

The addition will include a new gymnasium that will double as a storm shelter. The existing gym will become a student commons and cafeteria. This area will increase multi-function space for teachers and students as well as allow for use of gymnasium during events in commons.

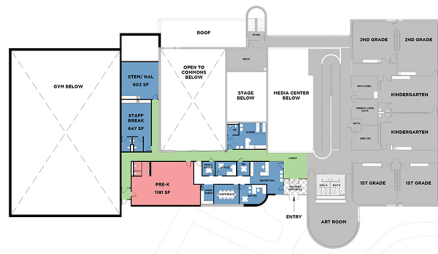
A new kitchen will also be included in this area to allow for on-site cooking of daily meals.

Reconfiguration in the existing Media Center will allow for increased learning space for students. Among options being explored are a small meeting area and a media center classroom.

ADA upgrades to the existing bathrooms will occur within this project. The addition of restrooms adjacent to the new gymnasium will allow for existing restrooms to meet accessibility needs.



View of Entry



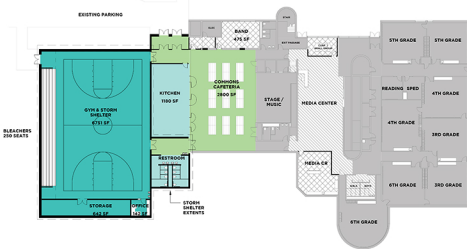
View of Commons



View of Administration

FLOOR PLAN - UPPER LEVEL

SCALE 3/64" = 1'-0"



FLOOR PLAN - LOWER LEVEL

SCALE 3/64" = 1'-0"



View of North Entrance