

Use of District Resources

Goals  Funding Sources
Teamwork  Communication
Architecture Engineering Planning Interiors

Cooperation

Tradition

Fundraising
Learning Environment

High Student Achievement

SPRINGFIELD PLATTEVIEW COMMUNITY SCHOOLS MASTER PLAN STUDY

Student Centered Learning

Agenda

SPRINGFIELD PLATTEVIEW COMMUNITY SCHOOLS – MASTER PLAN

Acknowledgements

Current Enrollment & Building Capacities

School District General Information

School District Growth Factors

Future Housing & Enrollment Projection Map

Future Enrollment Growth Modeling

Next Step(s)



Source Information

SPRINGFIELD PLATTEVIEW COMMUNITY SCHOOLS – MASTER PLAN

- Springfield Platteview Community School District
- Sarpy County Comprehensive Plan – Revised 2017
- City of Springfield Comprehensive Plan – Adopted 2015
- City of Papillion Comprehensive Plan
- Southern Ridge Wastewater Study
- Platteview Road Corridor Study
- US Census Bureau
- Lana Bayless – DLR Group
- Patrick Phelan – DLR Group

Current Enrollment and Capacity

SPRINGFIELD PLATTEVIEW COMMUNITY SCHOOLS – MASTER PLAN

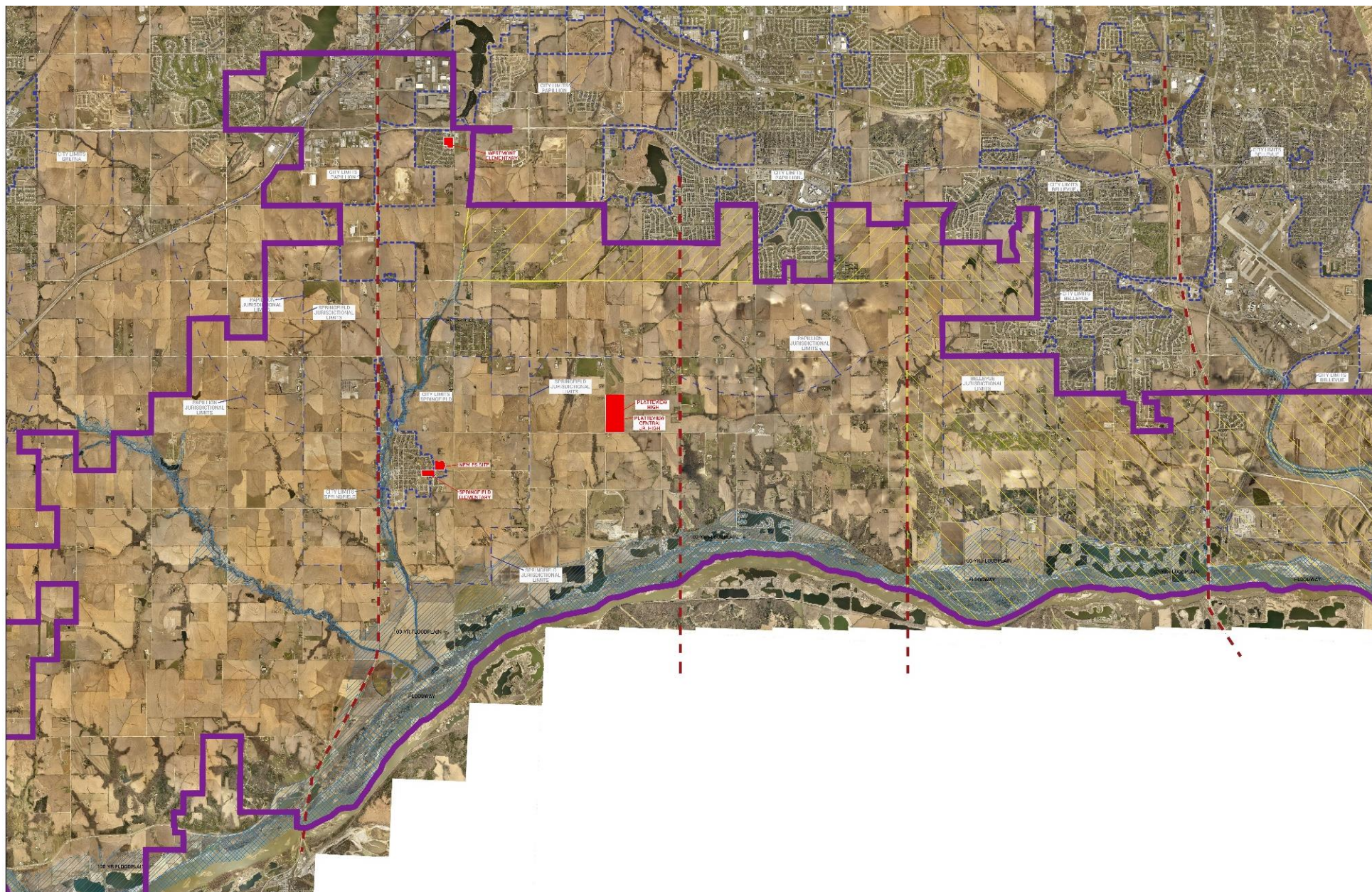
	2017-18 Enrollment	Current Capacity	Available Capacity	%
Westmont Elementary School	253	302	49	84%
Springfield Elementary School	266	302	36	88%
Platteview Central Junior High	202	192	-10	105%
Platteview High School	397	412	15	96%
Totals	1,118	1,208	90	92.5%

Future Enrollment Projections are based upon historical growth trend data and future demographic projections

Historical rate of growth

- 2016 – 2017 – 3.9% one year growth
- 2012 - 2017 – 2.87% average annual growth
- 2007 – 2017 – .56% average annual growth

SPRINGFIELD PLATTEVIEW COMMUNITY SCHOOLS – MASTER PLAN



School District Growth Factors

SPRINGFIELD PLATTEVIEW COMMUNITY SCHOOLS – MASTER PLAN

Infrastructure

- Sanitary Sewer - Southern Ridge Wastewater Study
- Water
- Roadways

Housing

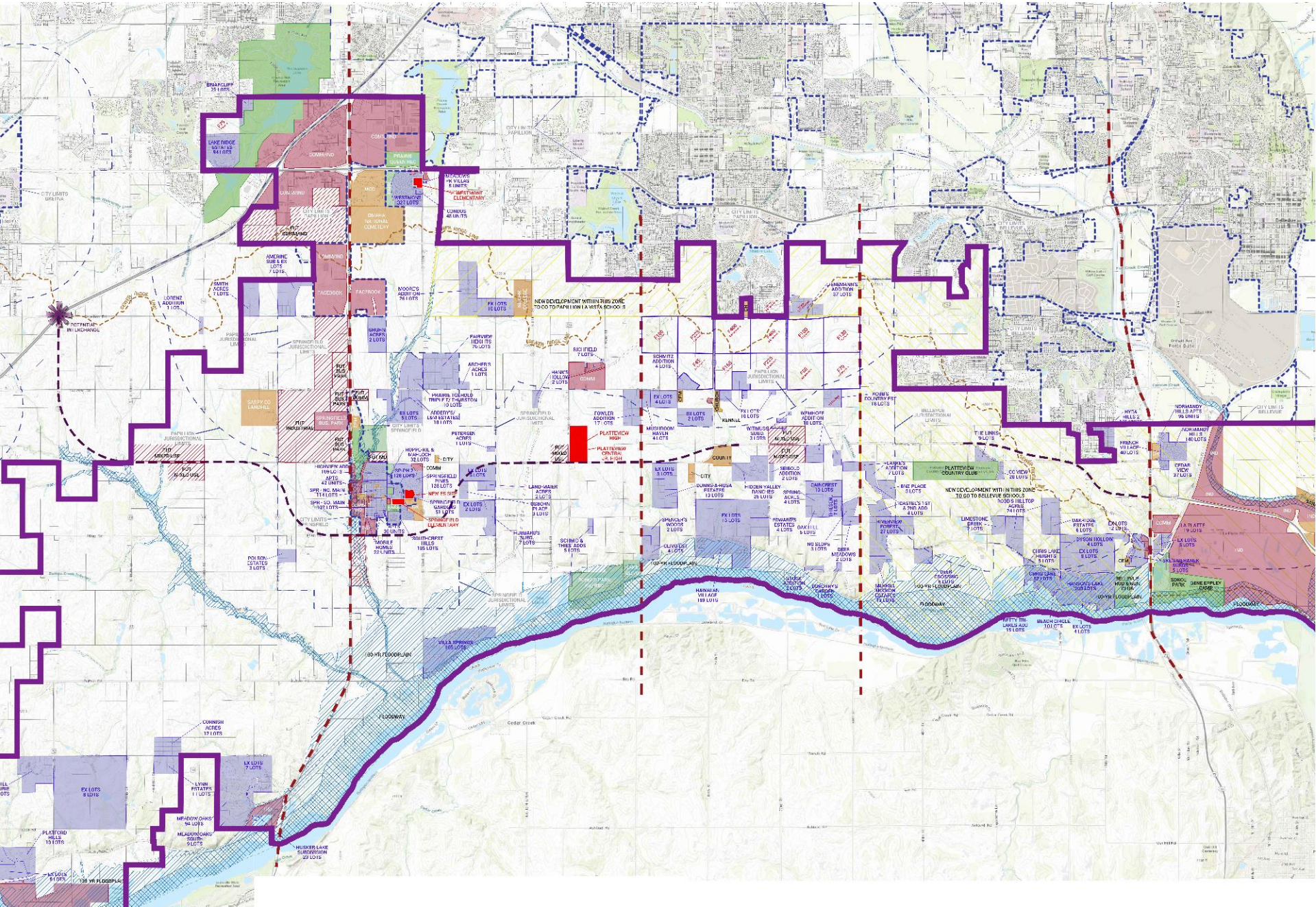
- Existing Developments – Springfield Pines Phase 1 & 2
- Future Developments

Business & Economic Development

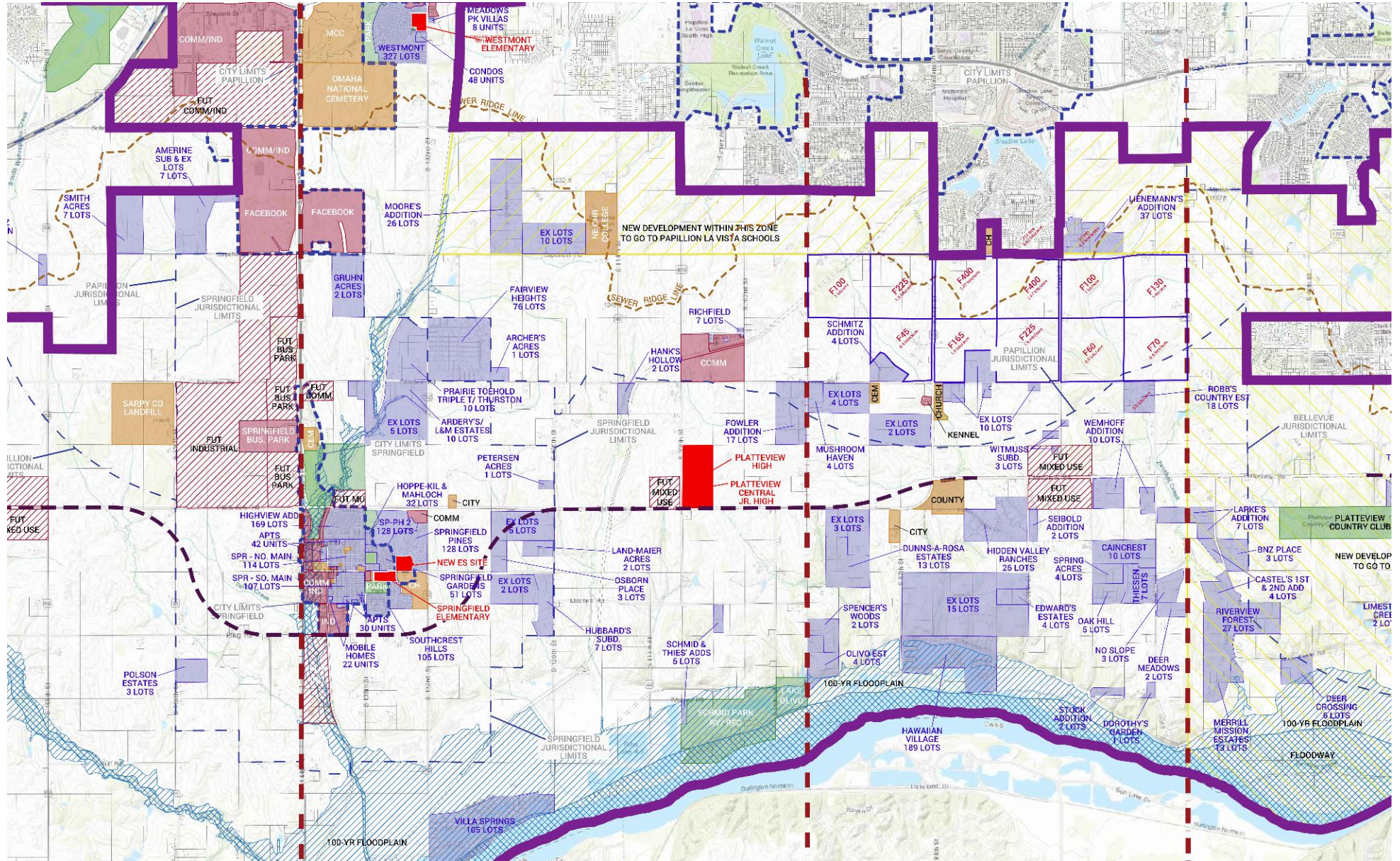
- Existing Developments
- Future Developments

Land Use & Future Housing Projection

SPRINGFIELD PLATTEVIEW COMMUNITY SCHOOLS – MASTER PLAN



SPRINGFIELD PLATTEVIEW COMMUNITY SCHOOLS – MASTER PLAN

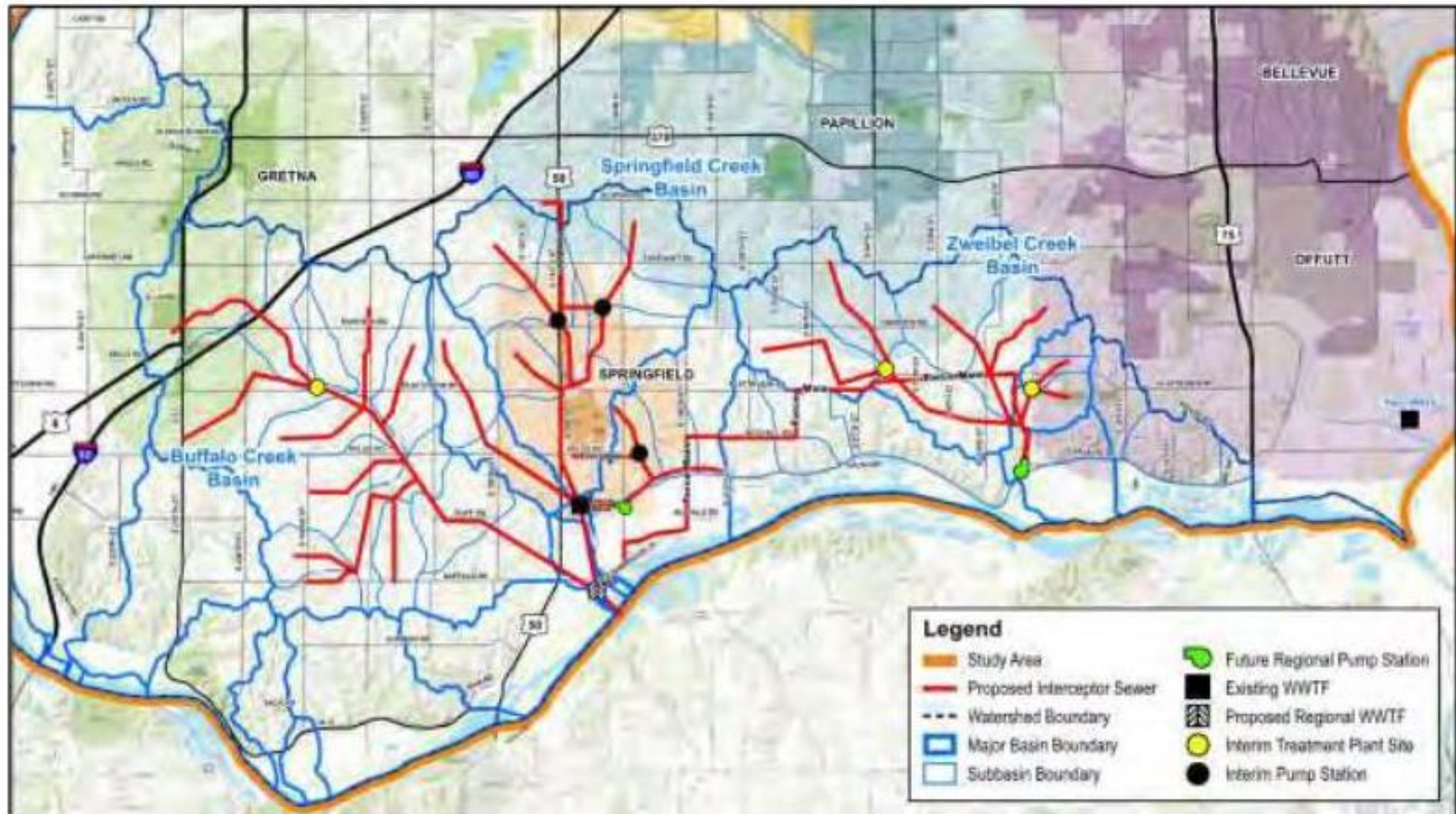


Land Use Future Enrollment Projection

SPRINGFIELD PLATTEVIEW COMMUNITY SCHOOLS – MASTER PLAN

Southern Ridge Wastewater Treatment Study

SPRINGFIELD PLATTEVIEW COMMUNITY SCHOOLS – MASTER PLAN



Southern Ridge Wastewater Treatment Study

SPRINGFIELD PLATTEVIEW COMMUNITY SCHOOLS – MASTER PLAN

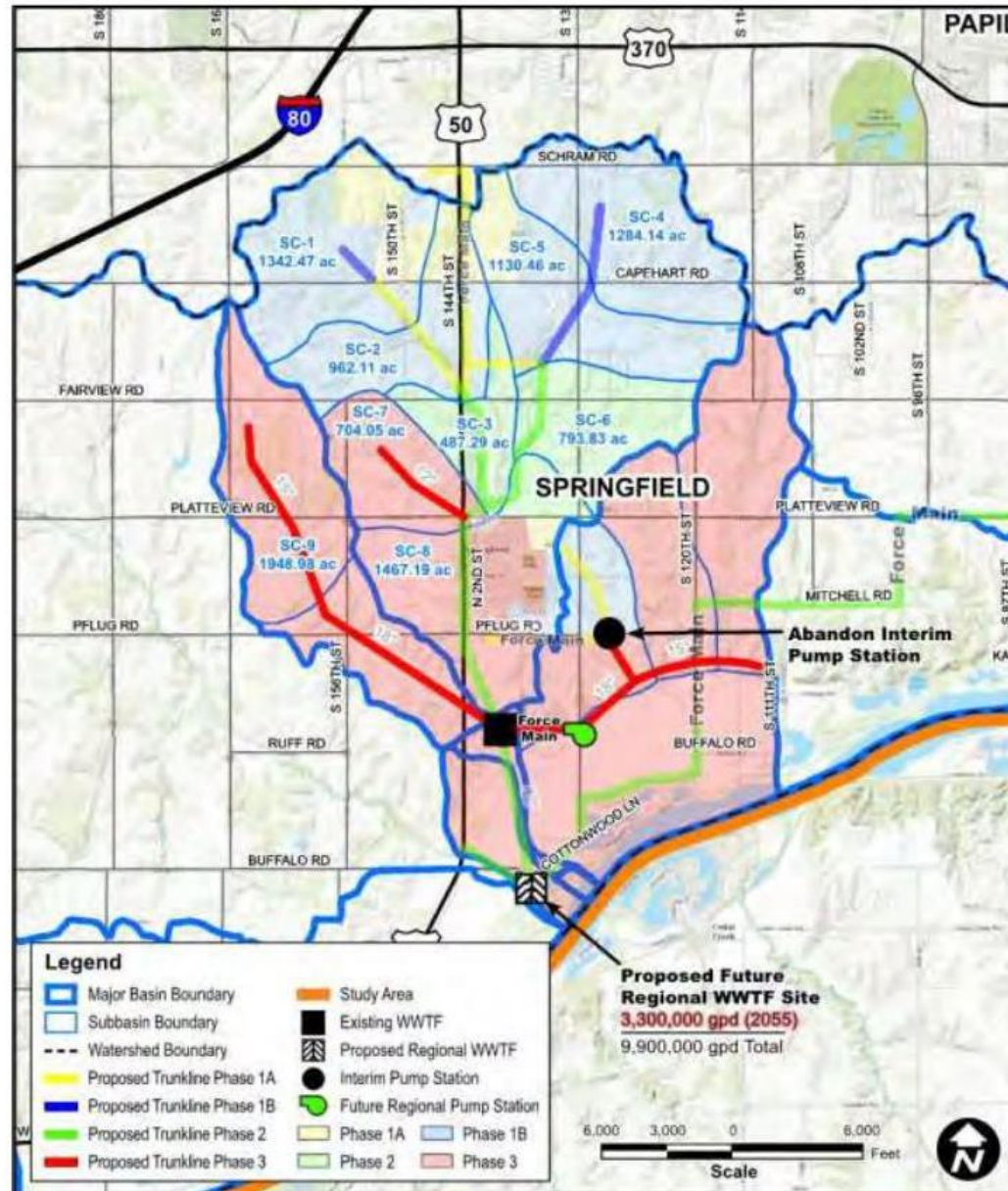


Figure 18. Phase 3 – Springfield Creek Basin

Southern Ridge Wastewater Treatment Study Model

SPRINGFIELD PLATTEVIEW COMMUNITY SCHOOLS – MASTER PLAN

Table 4 – Southern Sarpy County Population and Employment Forecasts by Basin								
Year	Buffalo Creek		Springfield Creek		Zweibel Creek		Southern Sarpy County	
	Population	Employment	Population	Employment	Population	Employment	Population	Employment
2020	571	99	571	99	127	22	1,269	220
2025	2,773	525	2,773	525	616	117	6,162	1,168
2030	6,578	1,282	7,122	1,390	3,335	657	17,035	3,329
2035	10,574	2,094	11,689	2,318	6,189	1,237	28,452	5,648
2040	14,652	2,924	17,398	3,481	12,713	2,566	44,763	8,971
2045	18,730	3,761	23,106	4,652	19,237	3,905	61,073	12,319
2050	21,930	4,539	27,586	5,742	24,357	5,150	73,873	15,431
2055	25,130	5,332	32,067	6,851	29,477	6,418	86,674	18,602

As noted previously, growth forecasting efforts were coordinated closely with the MAPA 2050 Model.

Figures 2-5 compare the Regional Study growth forecasting (population and employment), summarized in Table 4, to the MAPA 2050 projections for the County as a whole and for southern Sarpy County.



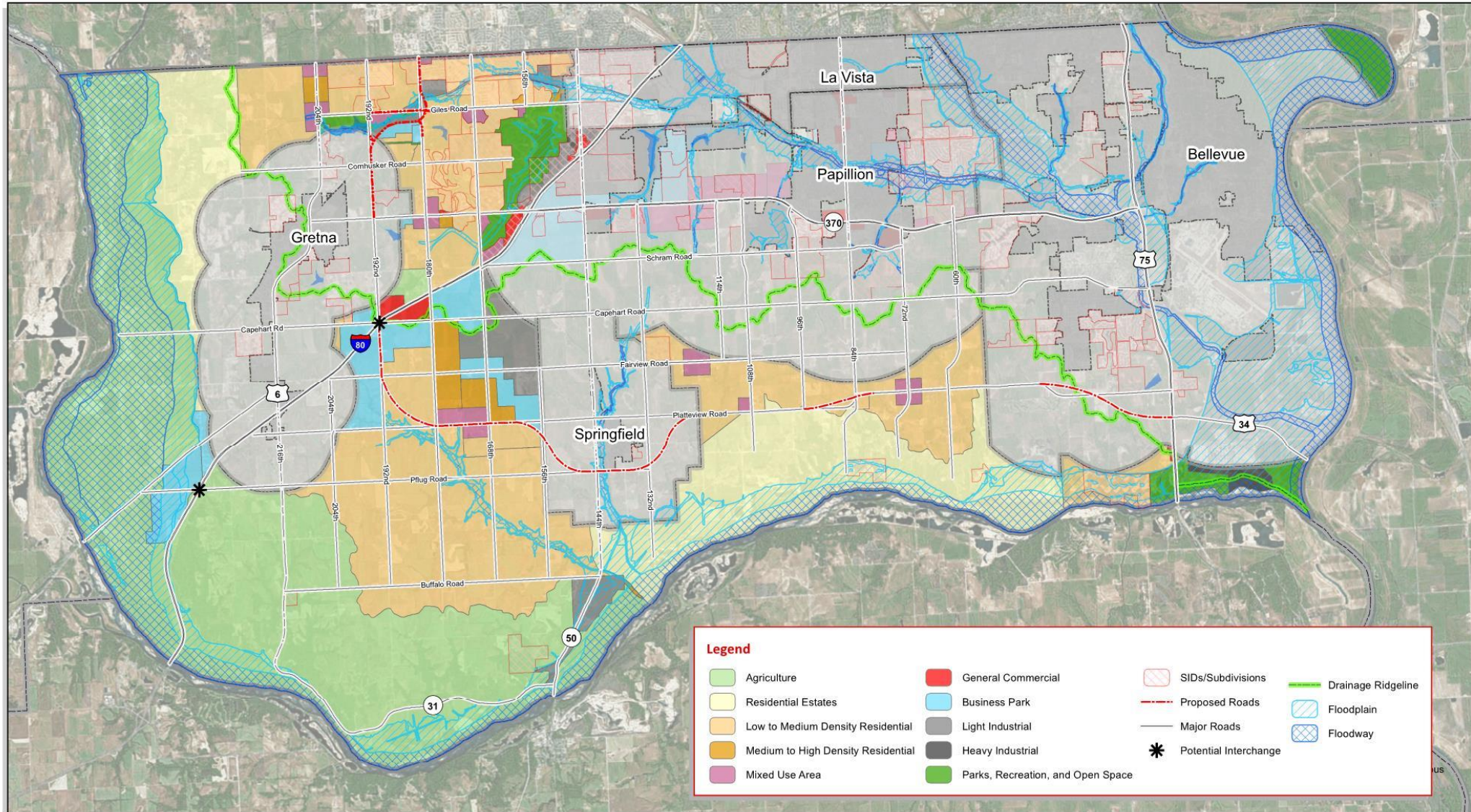
SPRINGFIELD PLATTEVIEW COMMUNITY SCHOOLS WOULD INCLUDE APPROXIMATELY 50% OF THIS PROJECTED POPULATION INCREASE = 8,518 PEOPLE OF WHICH 20% WOULD OF SCHOOL AGE = 1,704 ADDITIONAL STUDENTS BY THE YEAR 2030.



SPRINGFIELD PLATTEVIEW COMMUNITY SCHOOLS WOULD INCLUDE APPROXIMATELY 50% OF THIS PROJECTED POPULATION INCREASE = 43,337 PEOPLE OF WHICH 20% WOULD OF SCHOOL AGE = 8,667 ADDITIONAL STUDENTS BY THE YEAR 2055.

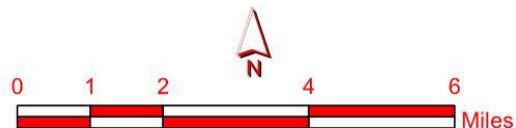
Future Enrollment and Capacity

SPRINGFIELD PLATTEVIEW COMMUNITY SCHOOLS – MASTER PLAN



Sarpy County Comprehensive Plan

Future Land Use



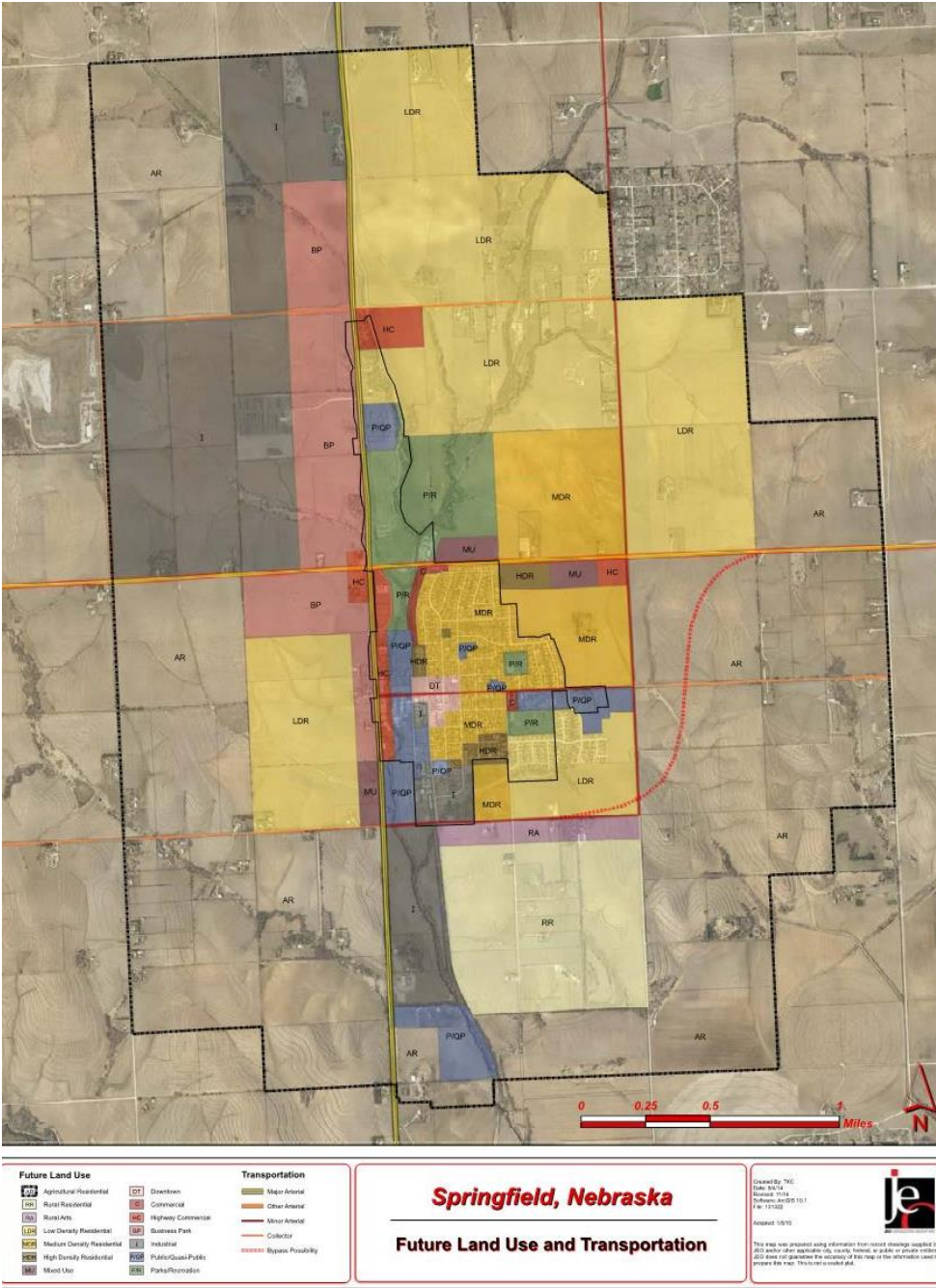
Created By: CPS
 Date: 2/10/2016
 Revised: 09/07/2017
 Software: ArcGIS 10.2
 File: 130339.00

This map was prepared using information from record drawings supplied by JEO and/or other applicable city, county, federal, or public or private entities. JEO does not guarantee the accuracy of this map or the information used to prepare this map. This is not a scaled plot.



Future Enrollment and Capacity

SPRINGFIELD PLATTEVIEW COMMUNITY SCHOOLS – MASTER PLAN



Future Enrollment and Capacity

SPRINGFIELD PLATTEVIEW COMMUNITY SCHOOLS – MASTER PLAN

Future Land Use Development Model – Total District Build Out

Total Area of Springfield – Platteview School District =	93 Square Miles	
Total Developed Area West of 60 th Street =	- 30 Square Miles	
Total Area East of 60 th Street Dedicated to Bellevue District =	- 18 Square Miles	
Total Area Dedicated to Dedicated to PALV District =	- 5 Square Miles	
Total Area in Floodplain / Floodway =	<u>- 5 Square Miles</u>	
<u>Total Undeveloped Area in S-P District =</u>	<u>35 Square Miles</u>	
Total Classified as Ag Land =	9 Square Miles X 400 Units / Mile = 3,600 Housing Units	
Total Classified as Low – Med Density Residential =	23 Square Miles X 400 Units / Mile = 9,200 Housing Units	
Total Classified as Med – High Density Residential =	1 Square Mile X 640 Units / Mile = <u>640 Housing Units</u>	
Total Classified as Industrial =	1 Square Mile	13,440 Total Units
Total Classified as Business / Commercial =	1 Square Mile	X
		<u>.65 Students / Unit</u>
		8,736 Students
		+
		<u>1,500 Current Students</u>
		10,236 Total Potential Students

Future Enrollment and Capacity

SPRINGFIELD PLATTEVIEW COMMUNITY SCHOOLS – MASTER PLAN

3% Average Annual Growth Rate Present - 2023

5 Year Enrollment Projection (2022-23)

- Elementary – 615 – 102% of capacity
- Junior High School – 161 - 84% of capacity
- High School – 395 – 96% of capacity
- TOTAL – 1,171 – 97% of capacity

6% Average Annual Growth Rate After 2023 - 2028

10 Year Enrollment Projection (2027-28)

- Elementary – 802 – 133% of capacity
- Junior High School – 208 – 108% of capacity
- High School – 434 – 105% of capacity
- TOTAL – 1,445 – 120% of capacity

9% Average Annual Growth Rate After 2028 - 2037

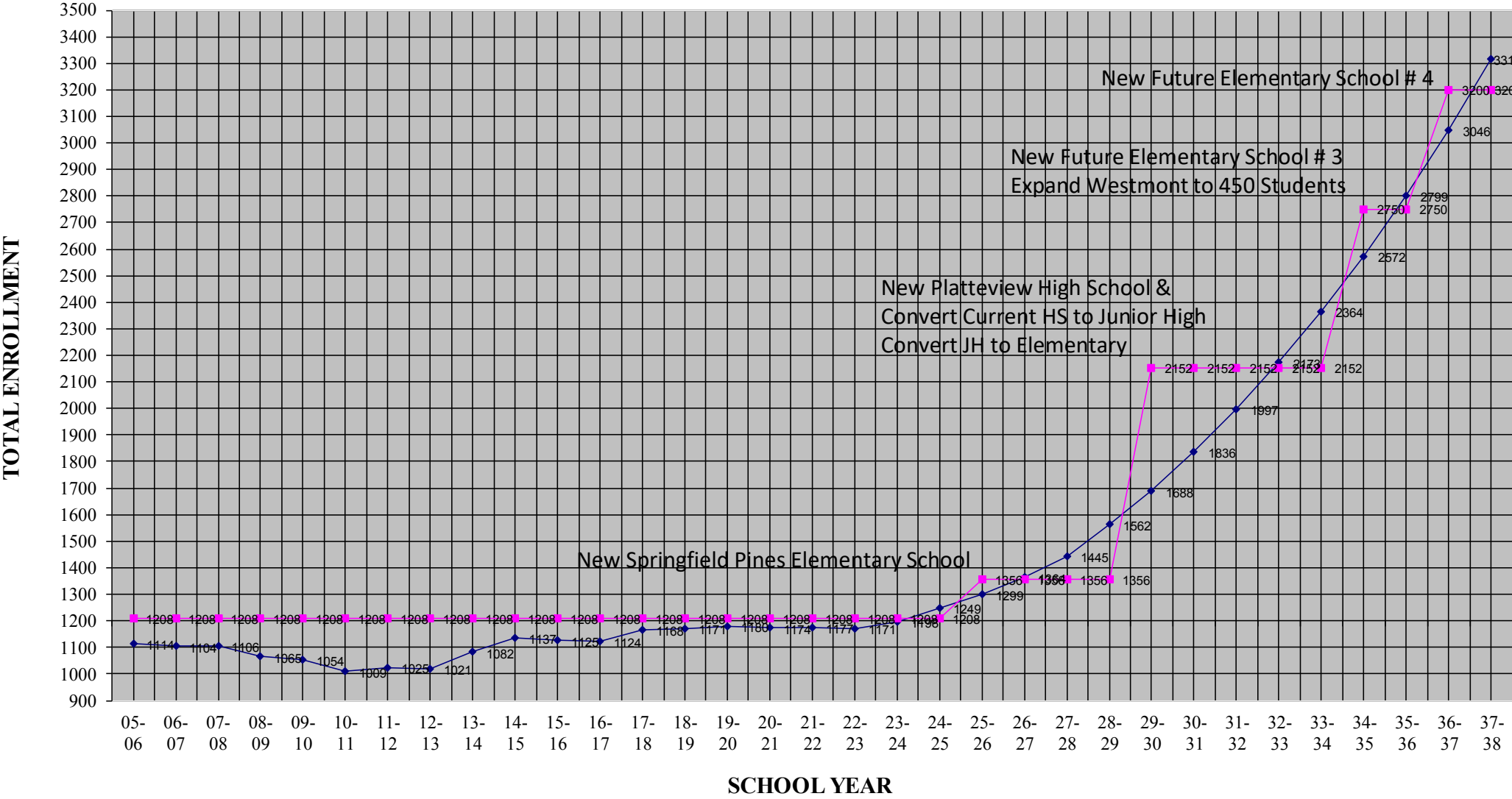
20 Year Enrollment Projection (2037-38)

- Elementary – 1,839 – 320% Growth
- Junior High School – 492 – 244% Growth
- High School – 984 – 251% Growth
- TOTAL – 3,315 – 284% Growth

Future Enrollment and Capacity

SPRINGFIELD PLATTEVIEW COMMUNITY SCHOOLS – MASTER PLAN

SPRINGFIELD PLATTEVIEW PUBLIC SCHOOL DISTRICT
Total Enrollment - Historical & 3% - 6% - 9% Projected Growth



Future Enrollment – Complete District Build-Out

SPRINGFIELD PLATTEVIEW COMMUNITY SCHOOLS – MASTER PLAN

Enrollment Projection (2055-56)

- Elementary – 5,550 (12 Elementary Schools at 450 Students / Building)
- Junior High School – 1,527 (2 Junior High Schools at 750 Students / Building)
- High School – 3,055 – (2 High Schools at 1,500 Students / Building)
- TOTAL – 10,132



QUESTIONS?